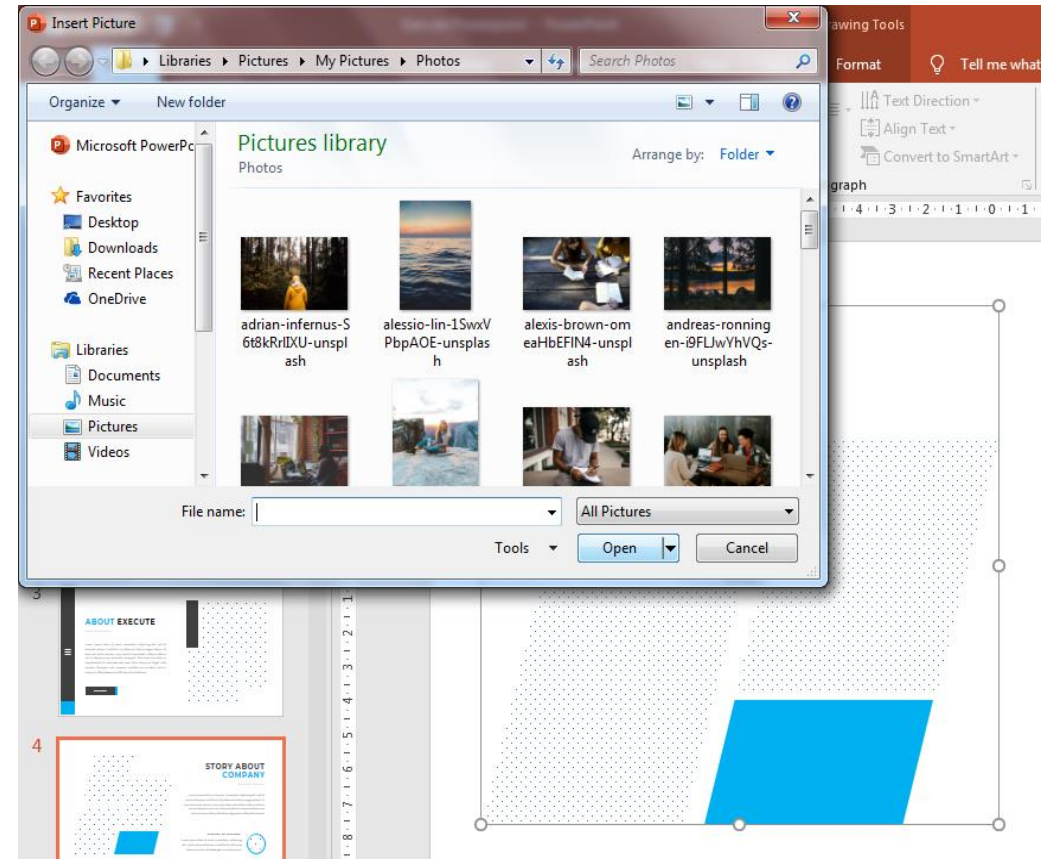
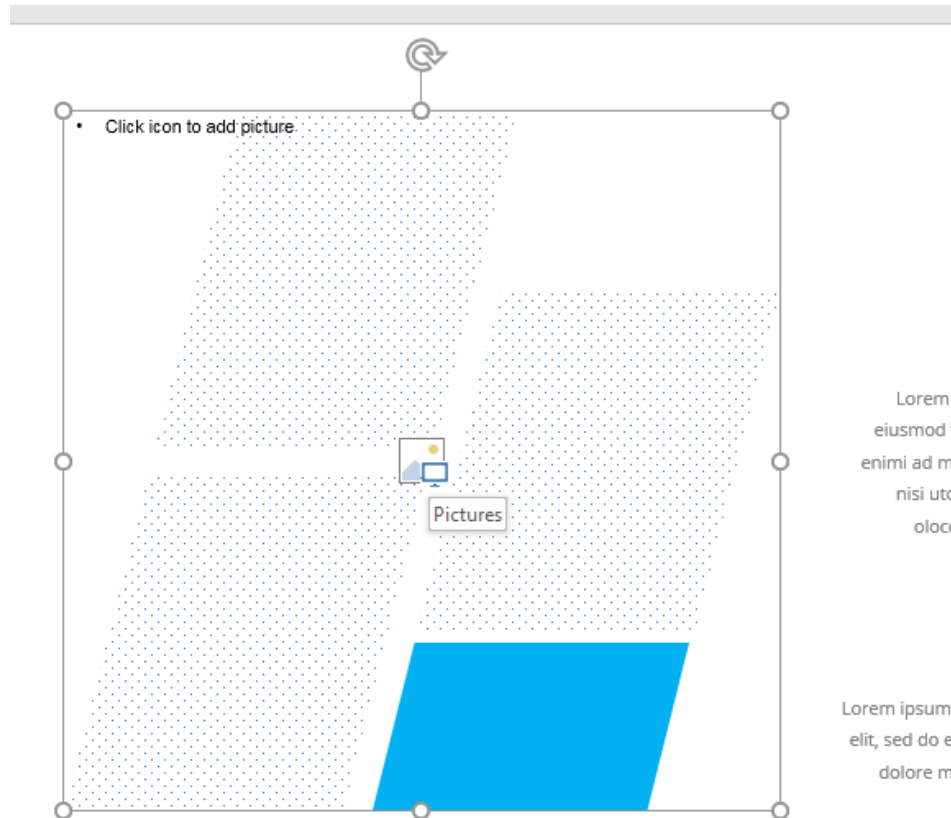


GUIDE FOR POWERPOINT TEMPLATE

HOW TO CHANGE THE IMAGES

- Go to **Image Section**.
- After that **Click The Area > Click Image icon** and **choose file from your library**. Click **Open**
- Note: (Also, You can drag and drop your image to the image placeholder)

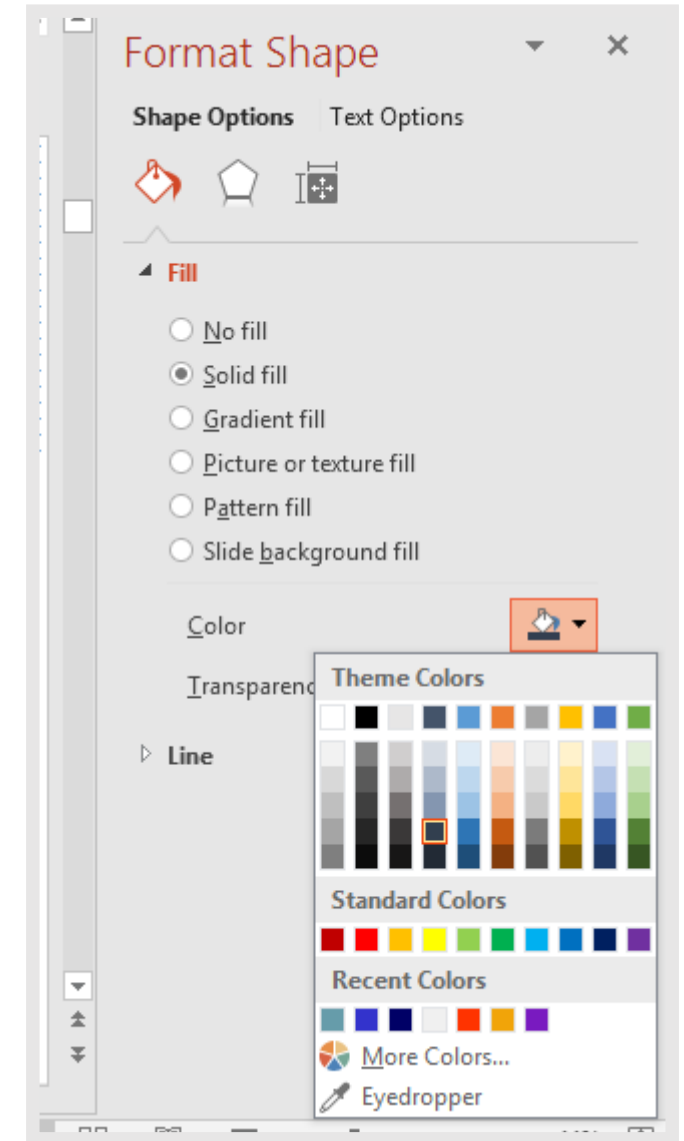


HOW TO CHANGE THE COLORS

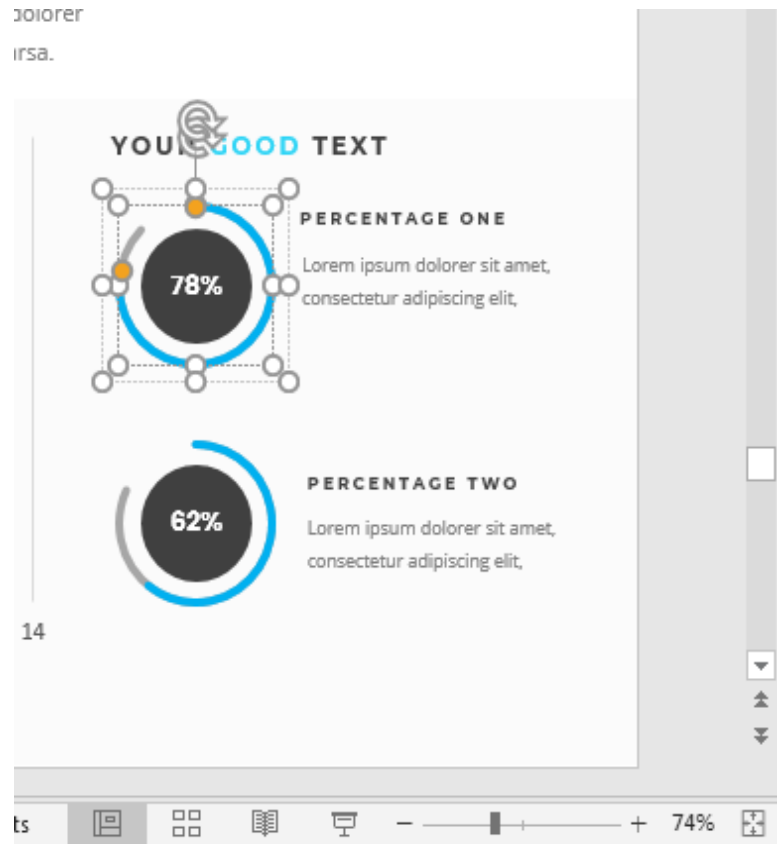
- Go to **The Area** that you need to change the color
(check in **Master Slides** or **Home**)
- After that, Right Click **Format Shape** -> click “**Paint Icon**” -> click “**fill**”
- Next, Select **Solid Fill**
- Finally, **Choose your favourite color.**

WHAT IF I WANT GRADIENT COLORS

- Go to **The Area** that you need to change the color
(check in **Master Slides** or **Home**)
- After that, Right Click **Format Shape** -> click “**Paint Icon**” -> click “**Gradient**”
- Next, Click on **Gradient Stops**
- Finally, **Choose your favourite color** and **Combine it.**



HOW I CHANGE THE PERCENTAGE ICON



- Click on **The Shape** which Grouping , Then click on the **rounded blue line** inside the Group.
- When you clicked it , the **Orange Point / Dot** will appear.
- After that , click on the **Orange Point / Dot** and turn **Orange Point / Dot** around the Rounded Blue Line.
- That shape of blue line will change to **Increase or Decrease**. It depends where you turn it.
- You can also change the number inside the circle. Whatever you want!

HOW TO INSTALL THE FONTS

- Step 1, Download the fonts (URL(s) are Included in **Read Me Info.txt**)
- Step 2, Copy Fonts into **C:\Windows\Fonts** (If you're using Windows or Right Click then Choose Install)

THE SECTION IS MISSING?

- IF you're found the missing section after **ADDING AN IMAGE PLACEHOLDER**
- Please "**SEND TO BACK THE IMAGE**". It will be put placeholder image at very bottom layer, and the missing section will showing up.

HOW TO USE ICONS

- You can add your Icon by **Choose It** on **Icon Slides**
- **Copy and Paste it** (Ctrl + C after that Ctrl + V) to your slides
- You can resize it or change the colors of the icon by **Click the Shape Fill** menu.