

# Professional Template with Unique and Clean Design

## Main package folder contains

**1 – PPTX** (Contains 2 Aspect Ratio (16:9) & (4:3) you will find Templates Guide in PPTX Folder.)

**2-90 Color Themes** (Please check below to know how to install themes)

**NOTE:** Please Contact me via my envato profile to support you.

## How to use this template:

*Install the Fonts before opening the template*

## Font info

Roboto (<https://fonts.google.com/specimen/Roboto>)

## How to install Theme Colors and add them to your PowerPoint?

- 1- Open "*Theme Colors*" folder.
- 2- *Select* all XML files in "*Theme Colors*" folder, *Copy* them.
- 3- *Paste* all XML files into your PowerPoint Theme colors folder.  
\*(*Theme Colors* folder path for each System you use)
- 4- **For Windows XP:**  
C:\Documents and Settings\[*your user name*]\Application Data\Microsoft\Templates\Document Themes\Theme Colors
- 5- **For Windows vista:**  
C:\Users\[*your user name*]\AppData\Roaming\Microsoft\Templates\Document Themes\Theme Colors
- 6- **For Windows 7:**  
C:\Users\[*your user name*]\AppData\Roaming\Microsoft\Templates\Document Themes\Theme Colors
- 7- **Windows 8, Windows 8.1:**  
C:\Users\[*your user name*]\AppData\Roaming\Microsoft\Templates\Document Themes\Theme Colors  
OR Add them to: C:\Program Files\Microsoft Office\Document Themes 15\Theme Colors
- 8- **For Mac OS:**
- 9- Users > [*your user name*] > Library > Application Support > Microsoft > Office > User Templates > My Themes > Theme Colors folder.  
The Library folder is not visible by default in some Mac OS, you can make it visible by:

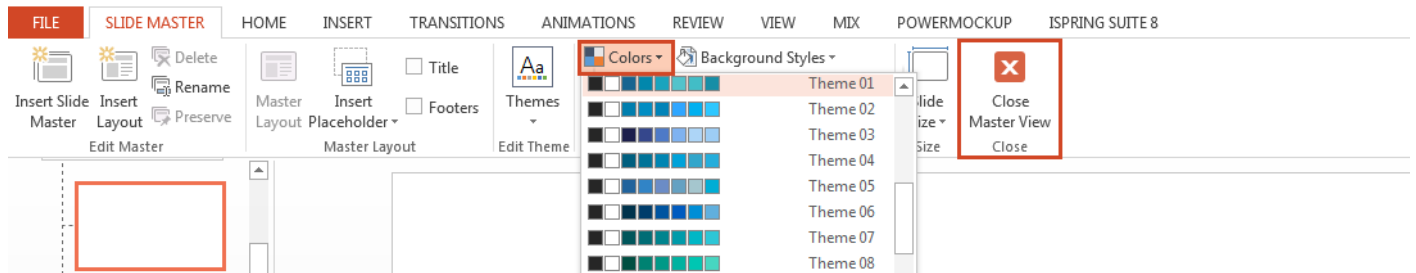
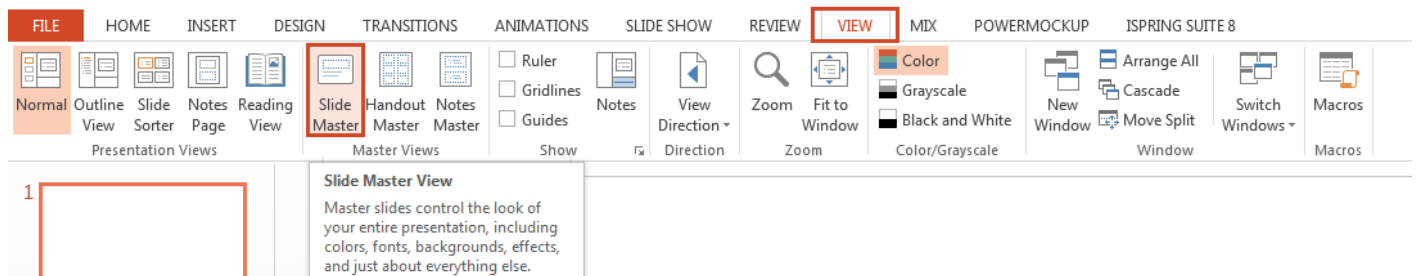
Run Terminal application (You'll find Terminal in the Utilities folder inside the Applications folder), paste this command into the Terminal window and then press Return: `chflags nohidden ~/Library/`

You can then quite the Terminal Application and you will find the Library folder where you expected it in the User directory.

\*After adding the color themes to your PowerPoint, You can simply apply any theme on your PowerPoint slides and the new theme will apply on all slides at once.

## How to change Theme Color?

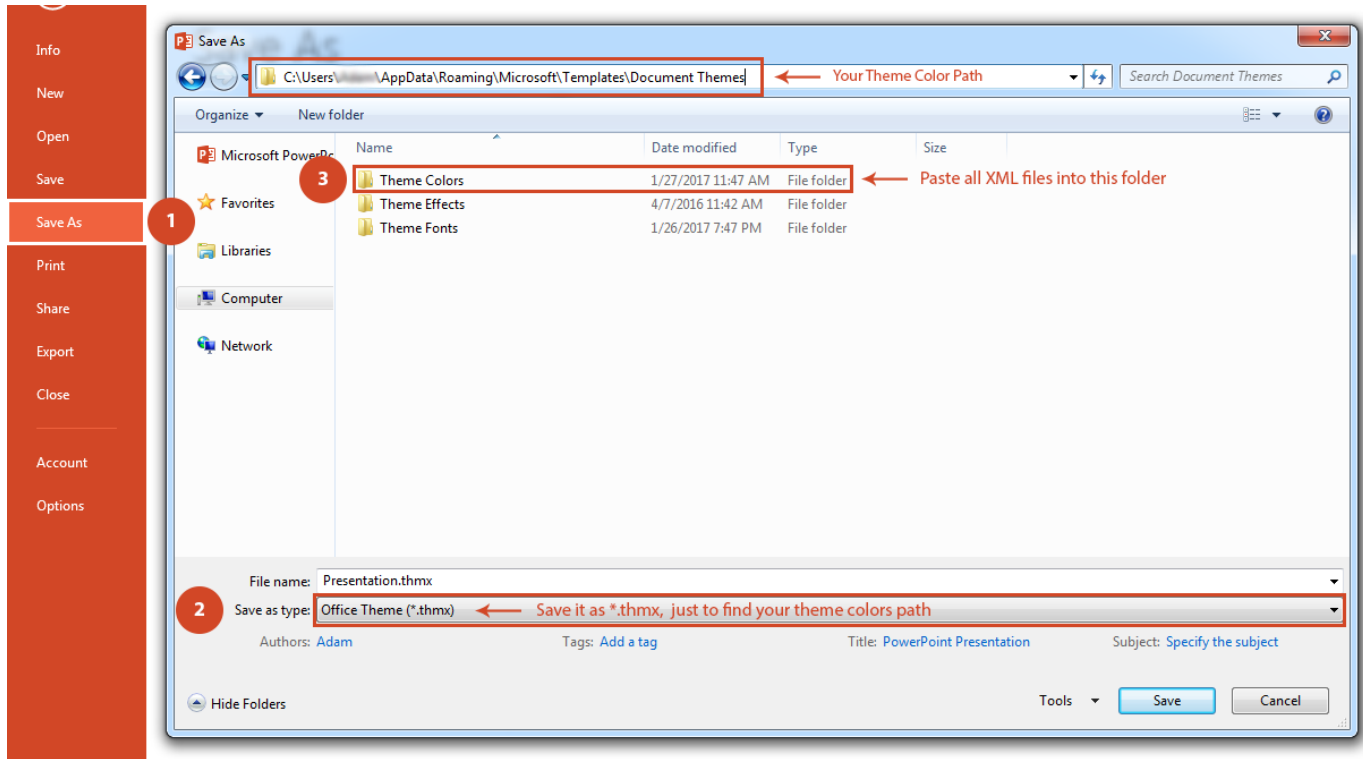
Go to **View** Tab ---> **Slide Master** ---> **Colors** ---> Pick the theme you want then close Master View



If you can't find the path of your theme folder, you can try this way

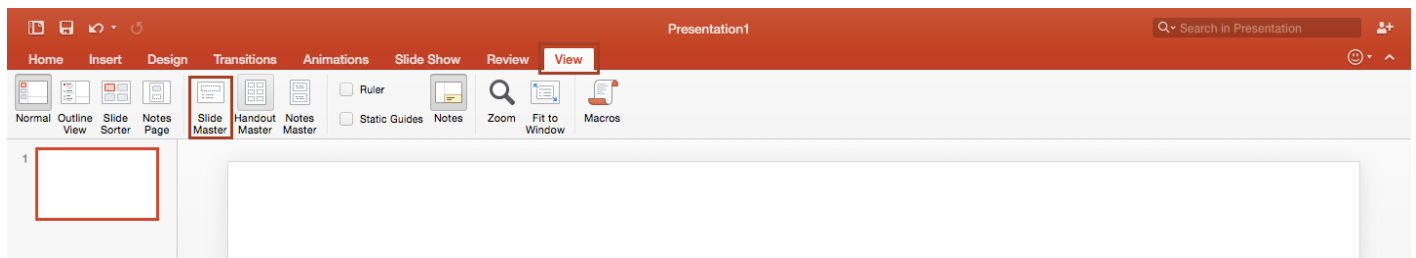
### 1- For PowerPoint on PC:

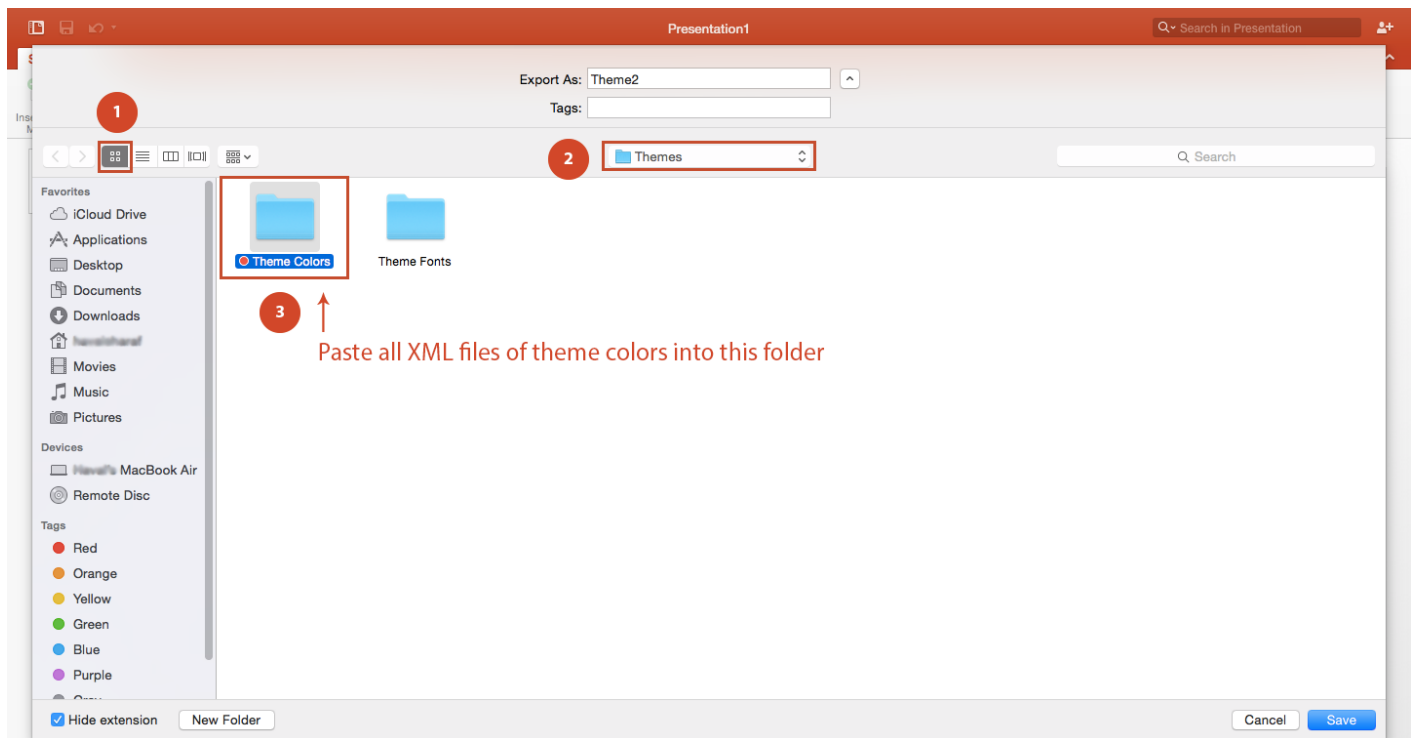
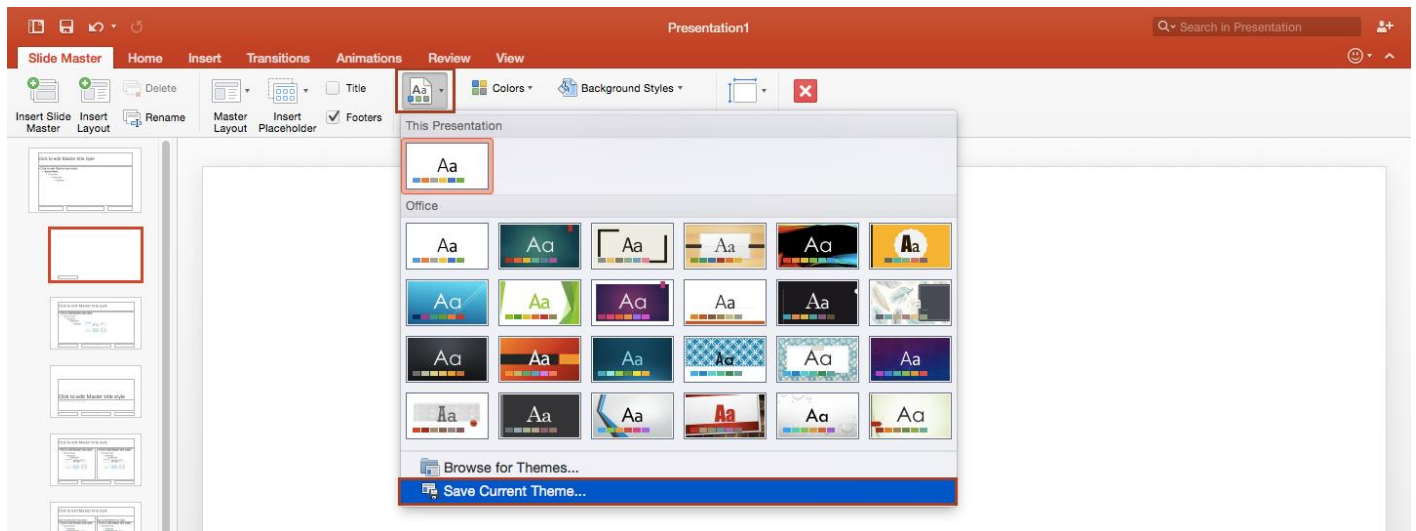
Open PowerPoint, any file, then try to save it as *\*.thmx*, just to find your theme colors path. You will find path to your Theme Colors, as shown in the image below.



## 2- For PowerPoint on Mac OS:

Open PowerPoint, any file, then Go to **View** Tab ---> **Slide Master** --- **Themes** ---> **Save Current Theme** just to find your theme colors path. You will find path to your Theme Colors, as shown in the images below.

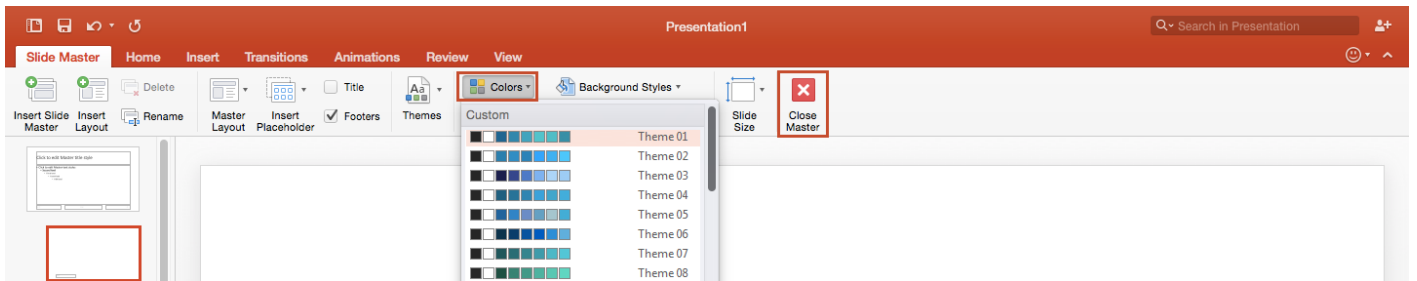
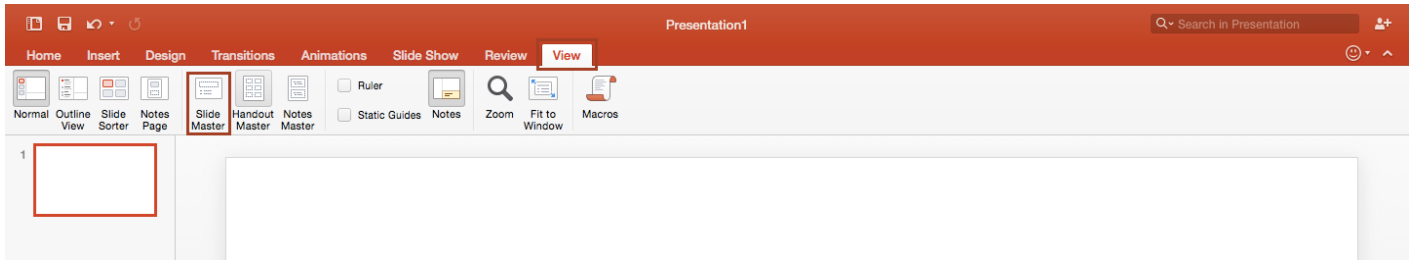




\*After adding the color themes to your PowerPoint, You can simply apply any theme on your PowerPoint slides and the new theme will apply on all slides at once.

## How to change Theme Color?

Go to **View** Tab ---> **Slide Master** ---> **Colors** ---> Pick the theme you want then close Master View



Best Regards,  
EchoMax