

# Company Toolbox

(175 Unique Slides)

Professional Template with Unique and Clean Concepts

**Main package folder contains:**

**1 - Company Toolbox Template Files** (Contains 5 Premade Templates with Two Aspect Ratio (16:9 + 4:3))

**2 -102 Color Themes** (Please check below to know how to install themes)

**3 -Template and Themes Guide** (To help you find what color theme you want to work on)

**4 -Icon Set**

**How to use this template:**

*Install the Fonts before opening the template*

**Font info**

Roboto Font (<https://www.fontsquirrel.com/fonts/roboto>)

## How to install Theme Colors and add them to your PowerPoint?

- 1- Open "*Theme Colors*" folder.
- 2- *Select* all XML files in "*Theme Colors*" folder, *Copy* them.
- 3- *Paste* all XML files into your PowerPoint Theme colors folder.  
\*(*Theme Colors* folder path for each System you use)
- 4- **For Windows XP:**  
C:\Documents and Settings\[*your user name*]\Application Data\Microsoft\Templates\Document Themes\Theme Colors
- 5- **For Windows vista:**

C:\Users\[*your user name*]\AppData\Roaming\Microsoft\Templates\Document Themes\Theme Colors

## 6- For Windows 7:

C:\Users\[*your user name*]\AppData\Roaming\Microsoft\Templates\Document Themes\Theme Colors

## 7- Windows 8, Windows 8.1:

C:\Users\[*your user name*]\AppData\Roaming\Microsoft\Templates\Document Themes\Theme Colors

**OR Add them to:** C:\Program Files\Microsoft Office\Document Themes 15\Theme Colors

## 8- For Mac OS:

- 9- Users > [*your user name*] > Library > Application Support > Microsoft > Office > User Templates > My Themes > Theme Colors folder.

The Library folder is not visible by default in some Mac OS, you can make it visible by:

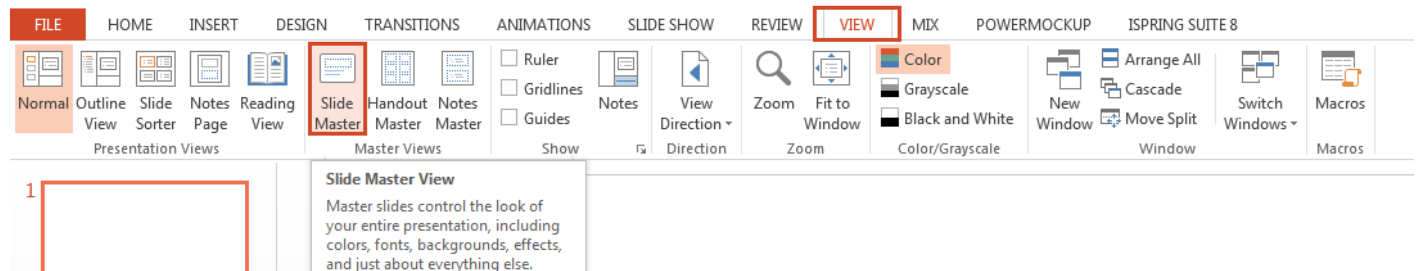
Run Terminal application (You'll find Terminal in the Utilities folder inside the Applications folder), paste this command into the Terminal window and then press Return: `chflags nohidden ~/Library/`

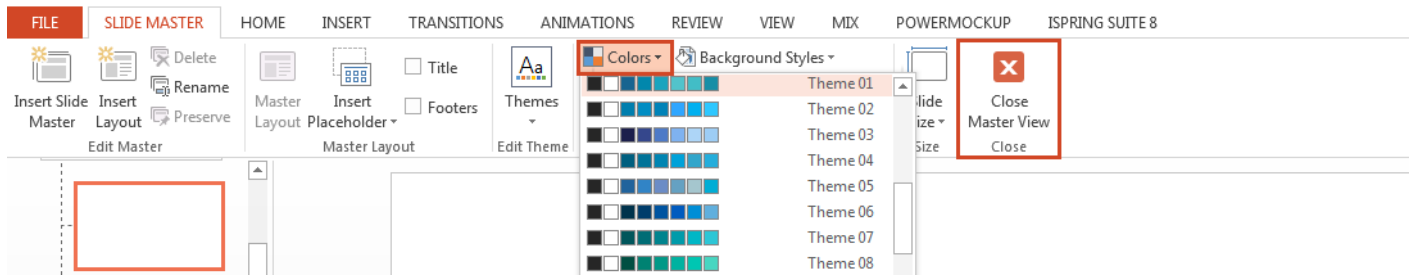
You can then quite the Terminal Application and you will find the Library folder where you expected it in the User directory.

\*After adding the color themes to your PowerPoint, You can simply apply any theme on your PowerPoint slides and the new theme will apply on all slides at once.

## How to change Theme Color?

Go to **View** Tab ---> **Slide Master** ---> **Colors** ----> Pick the theme you want then close Master View

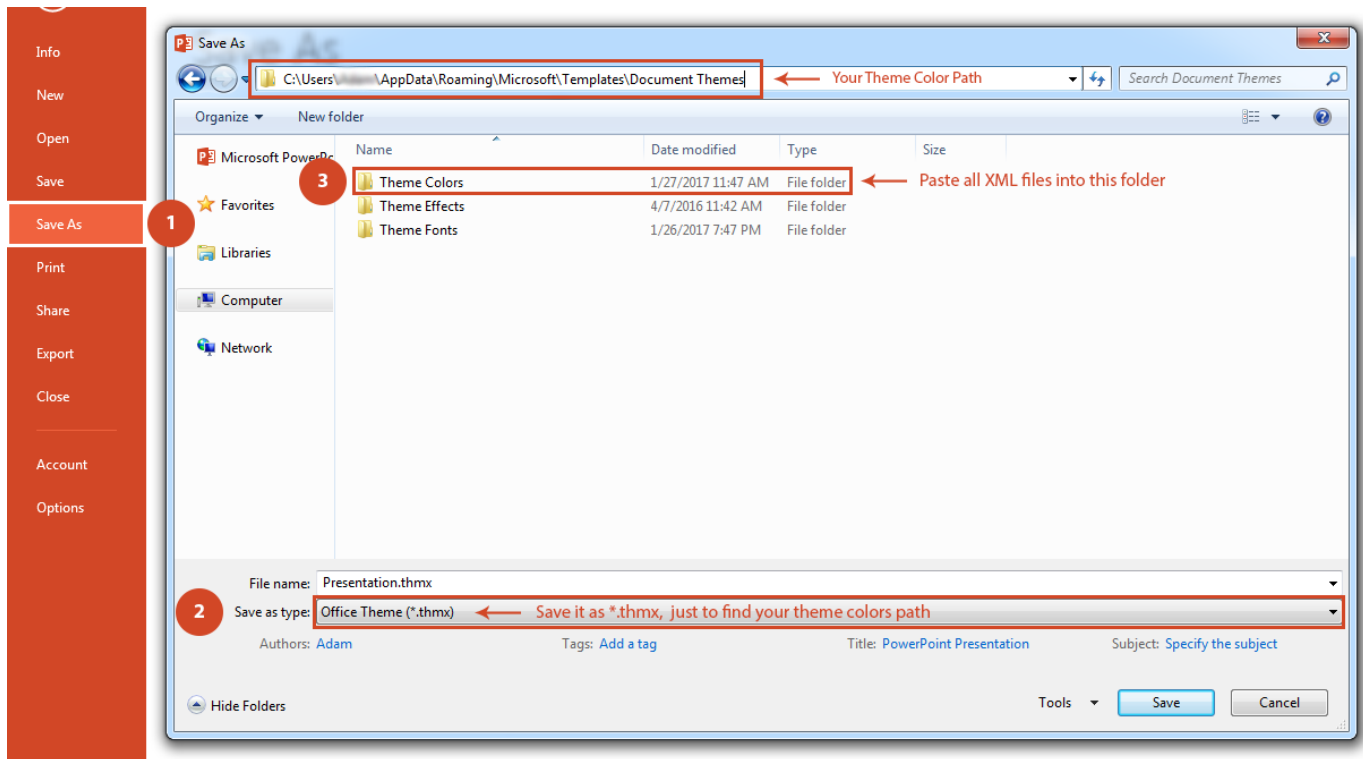




If you can't find the path of your theme folder, you can try this way

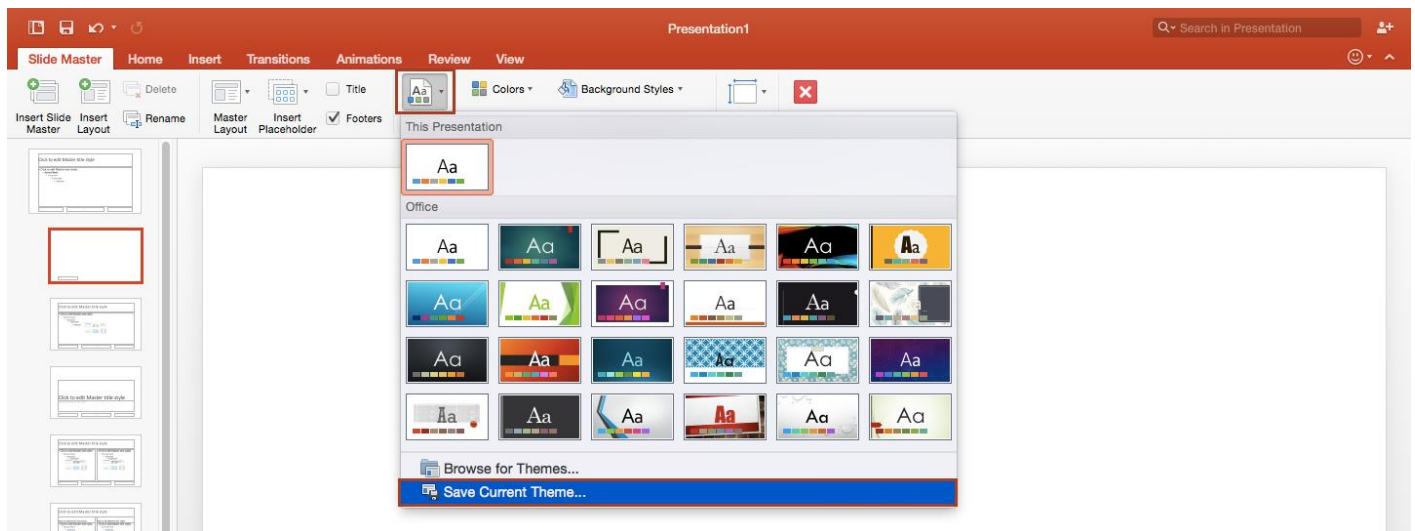
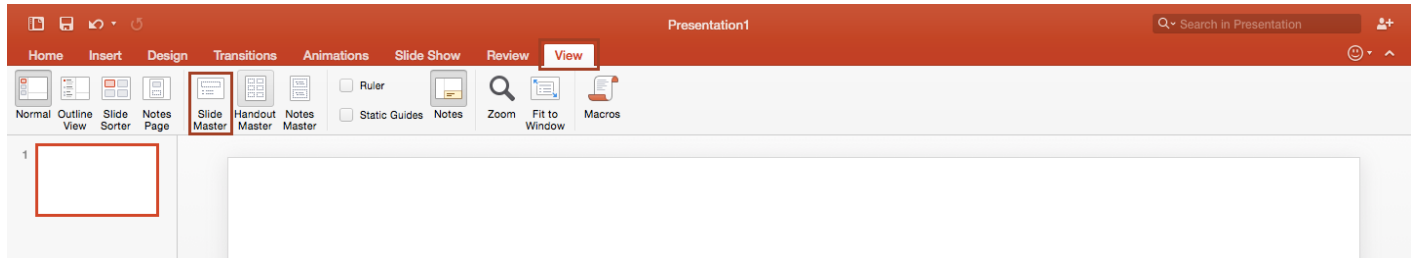
## 1- For PowerPoint on PC:

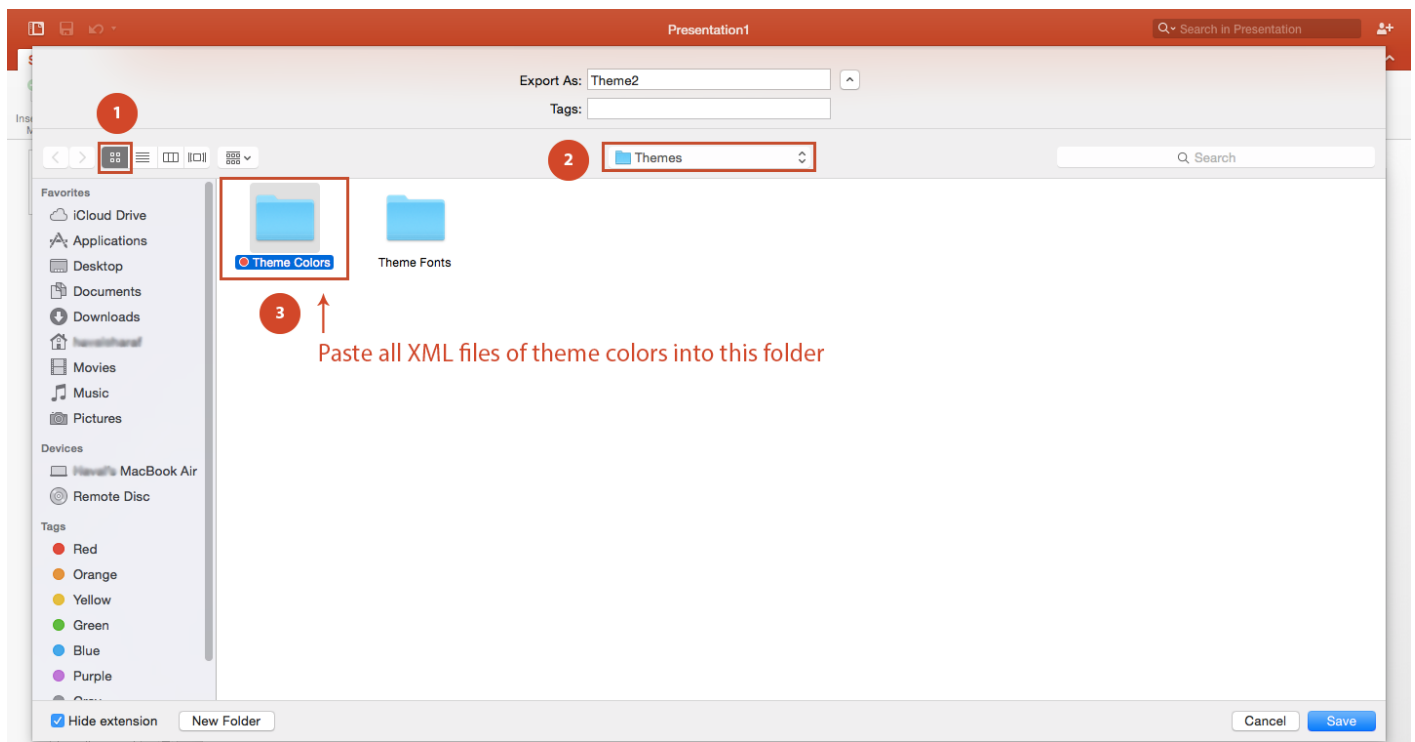
Open PowerPoint, any file, then try to save it as **\*.thmx**, just to find your theme colors path.  
You will find path to your Theme Colors, as shown in the image below.



## 2- For PowerPoint on Mac OS:

Open PowerPoint, any file, then Go to **View** Tab ---> **Slide Master** ---> **Themes** ---> **Save Current Theme** just to find your theme colors path. You will find path to your Theme Colors, as shown in the images below.

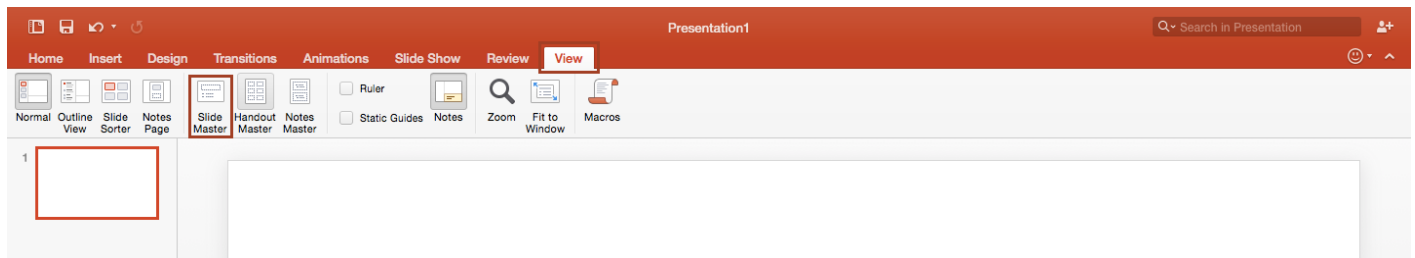


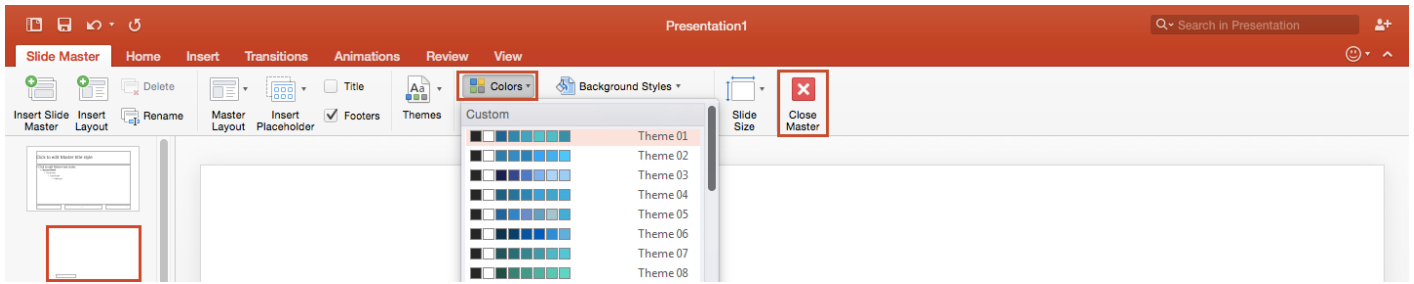


\*After adding the color themes to your PowerPoint, You can simply apply any theme on your PowerPoint slides and the new theme will apply on all slides at once.

## How to change Theme Color?

Go to **View Tab** ---> **Slide Master** ---> **Colors** ---> Pick the theme you want then close Master View





Best Regards,  
Rodi,