

Team Profile

(36 Unique Slides)

Professional Template with Unique and Clean Concepts

Main package folder contains:

1 – Team Profile files (Contains 5 Premade Templates with Two Aspect Ratio (16:9 + 4:3).

2 - 102 Color Themes (Please check below to know how to install themes)

3 -Template and Themes Guide (To help you find what color theme you want to work on)

4 -Icon Set

How to use this template:

Install the Fonts before opening the template

Font info:

Montserrat Font (<https://www.fontsquirrel.com/fonts/montserrat>)

How to install Theme Colors and add them to your PowerPoint?

- 1- Open "*Theme Colors*" folder.
- 2- *Select* all XML files in "*Theme Colors*" folder, *Copy* them.
- 3- *Paste* all XML files into your PowerPoint Theme colors folder.
*(Theme Colors folder path for each System you use)
- 4- **For Windows XP:**

C:\Documents and Settings\[your user name]\Application Data\Microsoft\Templates\Document Themes\Theme Colors

5- For Windows vista:

C:\Users\[your user name]\AppData\Roaming\Microsoft\Templates\Document Themes\Theme Colors

6- For Windows 7:

C:\Users\[your user name]\AppData\Roaming\Microsoft\Templates\Document Themes\Theme Colors

7- Windows 8, Windows 8.1:

C:\Users\[your user name]\AppData\Roaming\Microsoft\Templates\Document Themes\Theme Colors

OR Add them to: C:\Program Files\Microsoft Office\Document Themes 15\Theme Colors

8- For Mac OS:

- 9- Users > [your user name] > Library > Application Support > Microsoft > Office > User Templates > My Themes > Theme Colors folder.

The Library folder is not visible by default in some Mac OS, you can make it visible by:

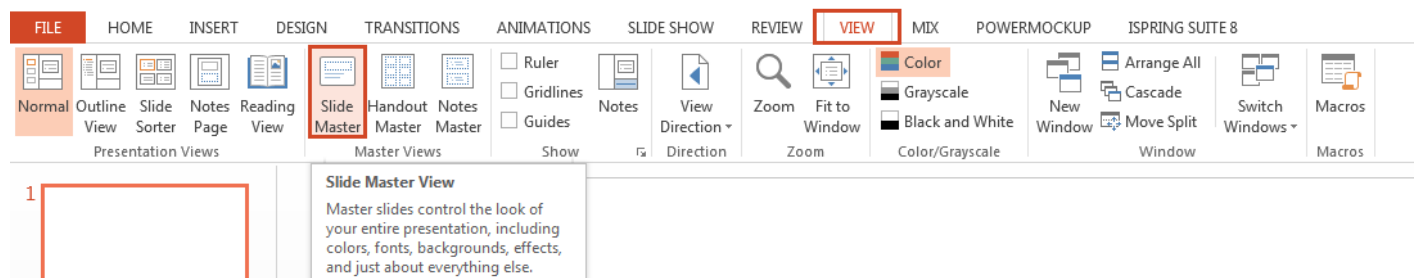
Run Terminal application (You'll find Terminal in the Utilities folder inside the Applications folder), paste this command into the Terminal window and then press Return: `chflags nohidden ~/Library/`

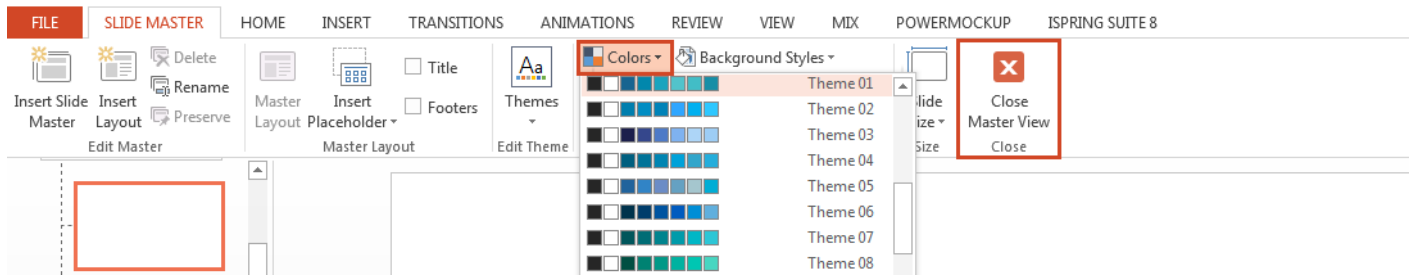
You can then quite the Terminal Application and you will find the Library folder where you expected it in the User directory.

*After adding the color themes to your PowerPoint, You can simply apply any theme on your PowerPoint slides and the new theme will apply on all slides at once.

How to change Theme Color?

Go to **View** Tab ---> **Slide Master** ---> **Colors** ---> Pick the theme you want then close Master View

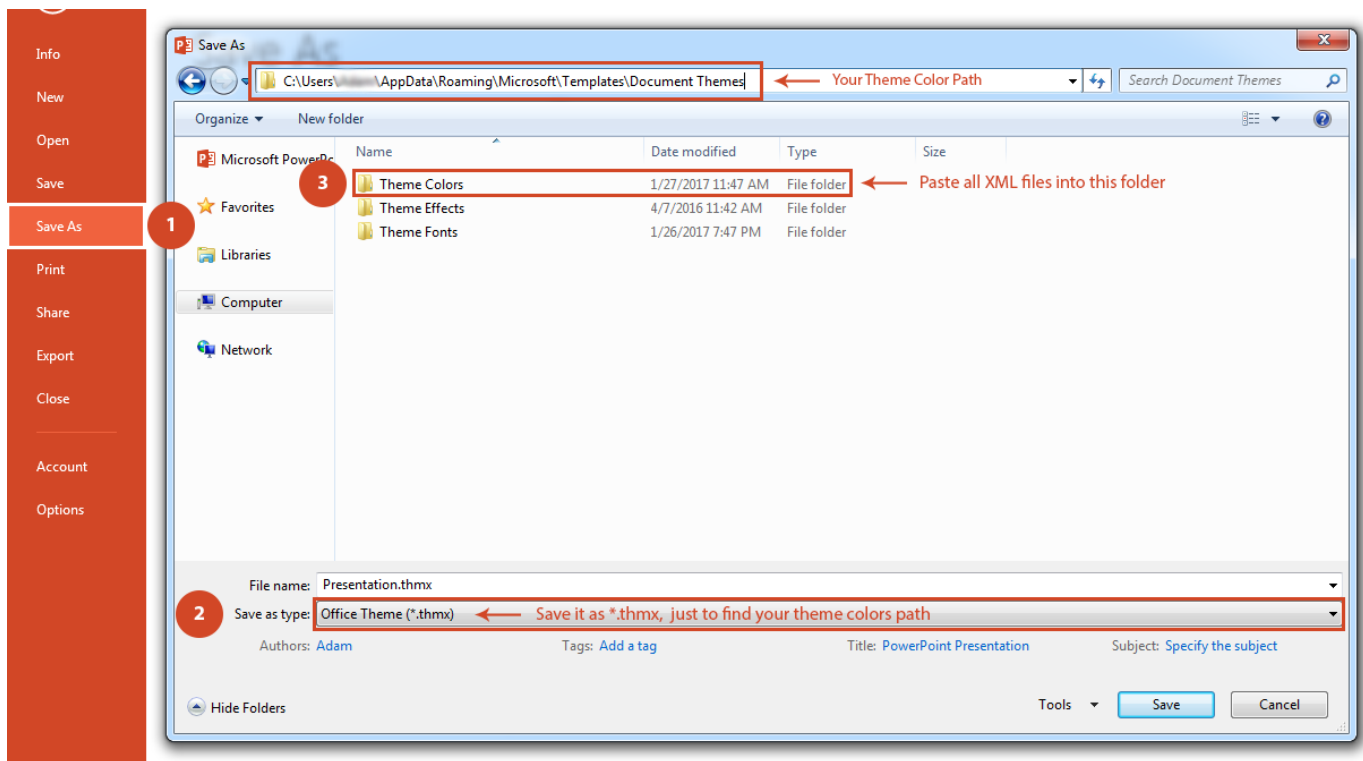




If you can't find the path of your theme folder, you can try this way

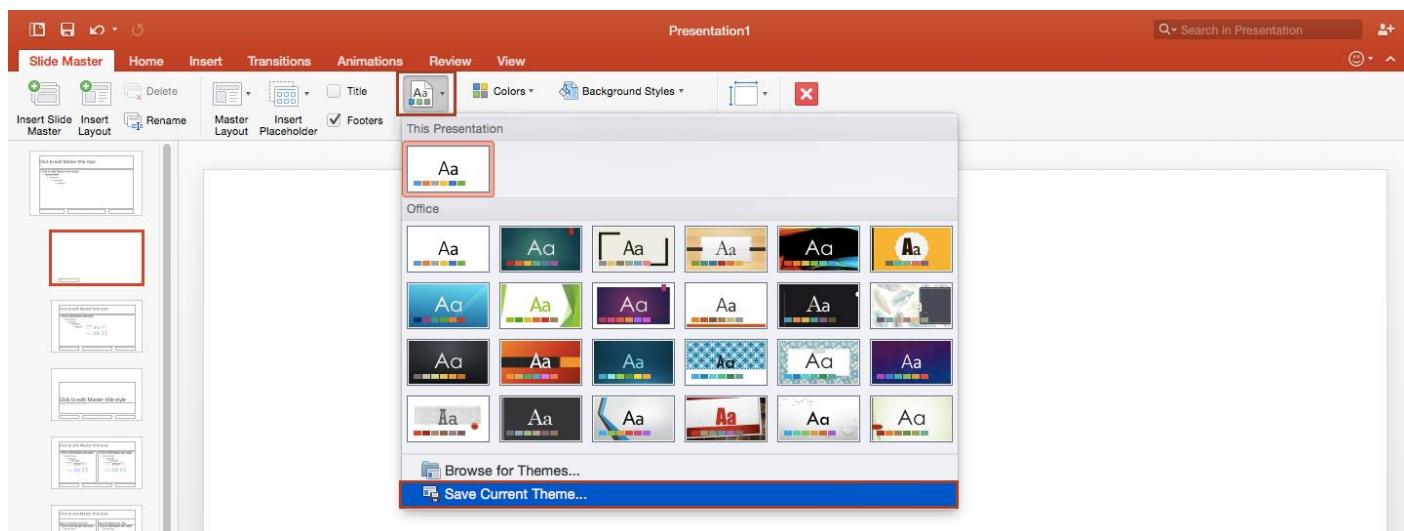
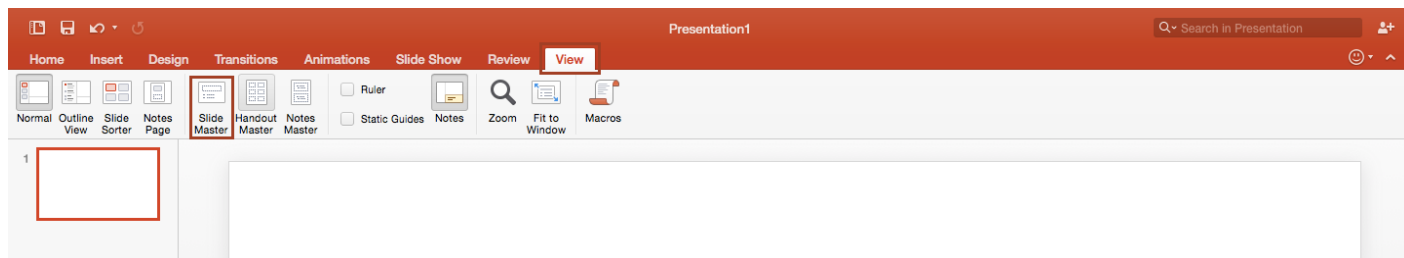
1- For PowerPoint on PC:

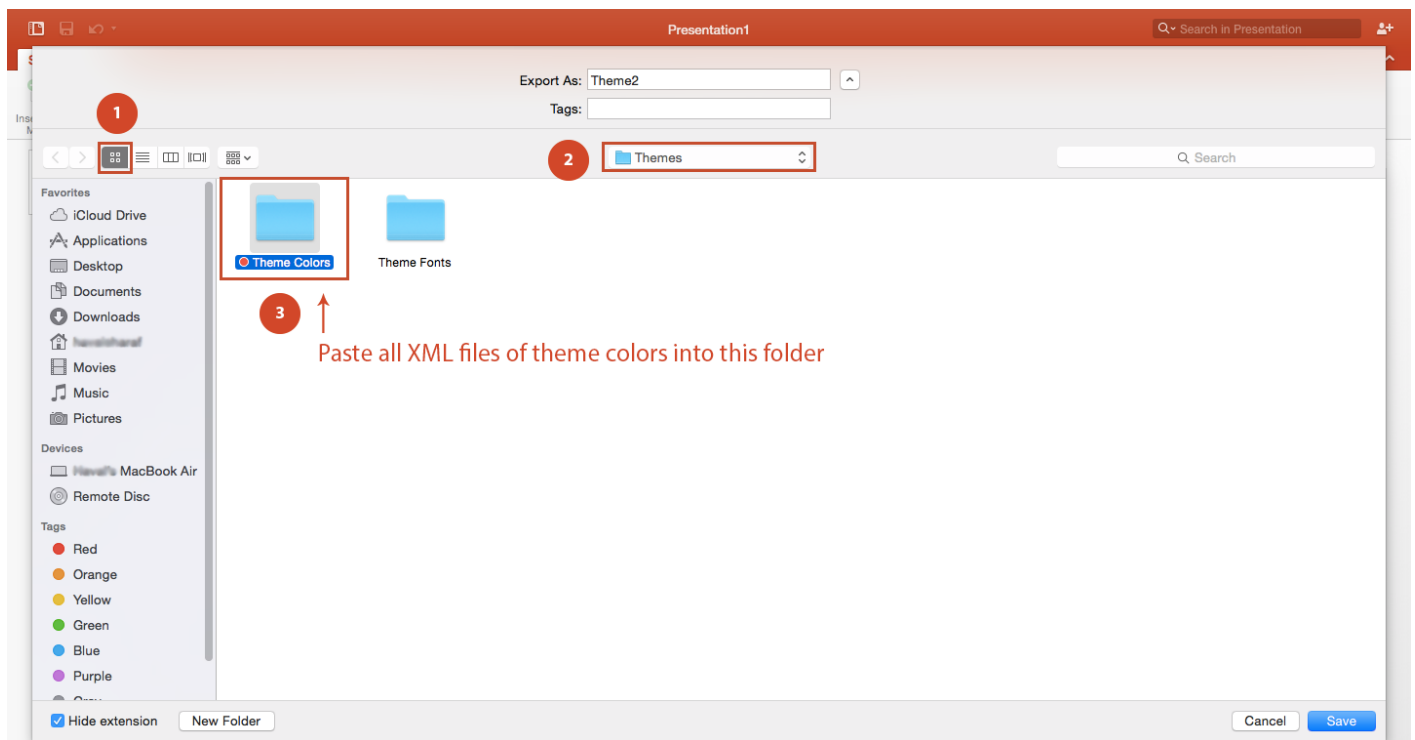
Open PowerPoint, any file, then try to save it as ***.thmx**, just to find your theme colors path.
You will find path to your Theme Colors, as shown in the image below.



2- For PowerPoint on Mac OS:

Open PowerPoint, any file, then Go to **View** Tab ---> **Slide Master** ---> **Themes** ---> **Save Current Theme** just to find your theme colors path. You will find path to your Theme Colors, as shown in the images below.

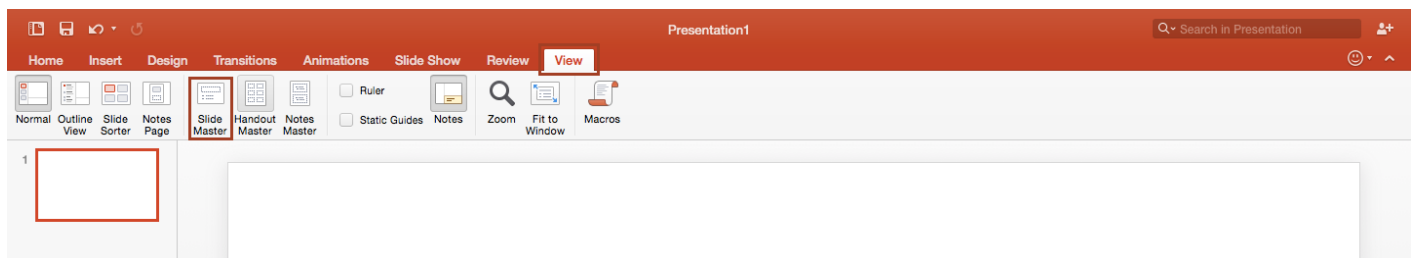


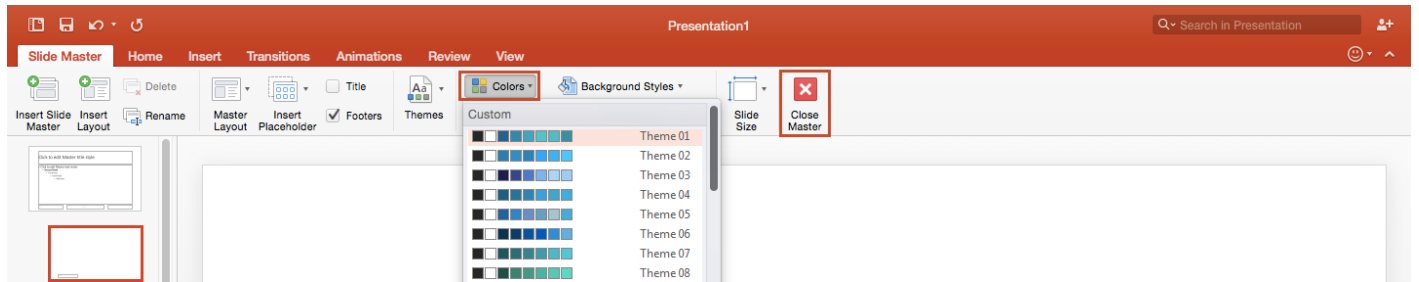


*After adding the color themes to your PowerPoint, You can simply apply any theme on your PowerPoint slides and the new theme will apply on all slides at once.

How to change Theme Color?

Go to **View Tab** ---> **Slide Master** ---> **Colors** ---> Pick the theme you want then close Master View





Best Regards,
Rodi,