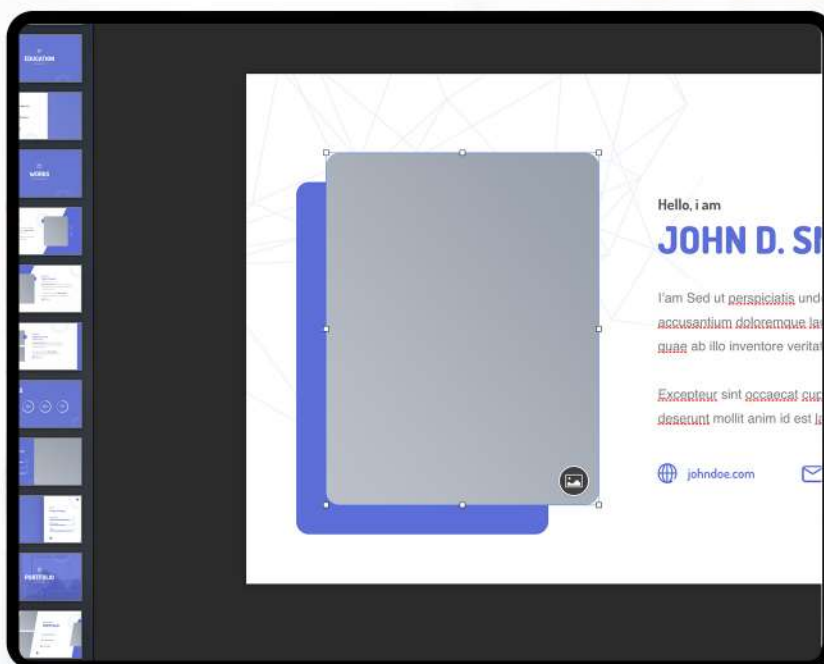


1

CHANGE THE IMAGES

- Go to image section
- Click the **Area** and **Drag** your image.

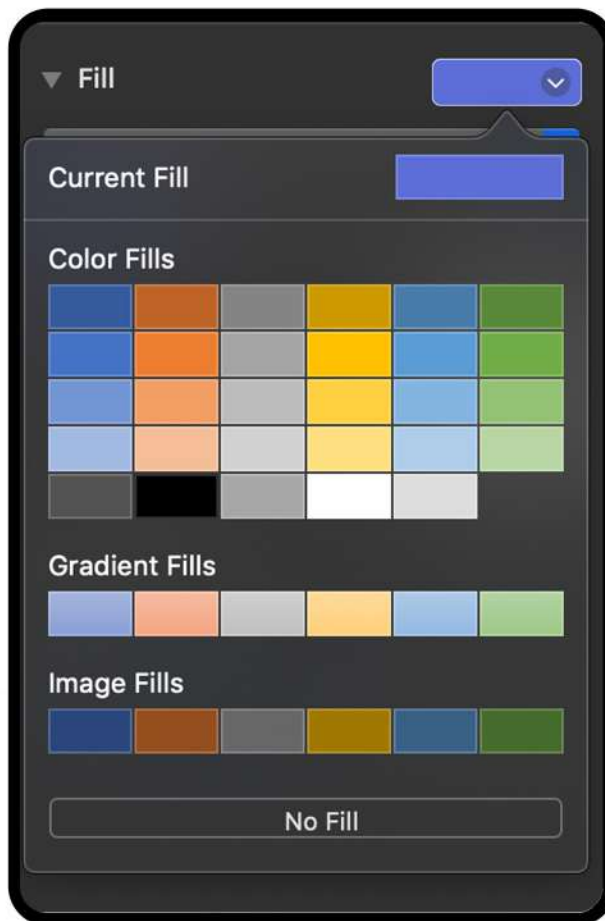


2

CHANGE THE COLORS

- Go to The Area that you need to change the color
- Click **Fill** on the right panel

- Finally, Choose your favourite color



3

THE SECTION IS MISSING?

- If you're found the missing section after **Adding an Image Placeholder**
- Please **"Send to Back"** Image. It will be put placeholder image at very bottom layer, and the missing section will showing up.



4

INSTALL THE FONTS

- Download the fonts (URL(s) are Included in **Readme.txt**)
- Double click the font and click **Install**

5

CHANGE OVERLAYED IMAGE

- Overlaid image is an image that is behind the background screen, for example :



- The image is behind a blue background
- **Step 1**, Right click on Front layer (blue background), then choose “**Send to Back**”



- This slide will show image placeholder like this



- **Step 2**, you can change image with **Drag & Drop Image** to placeholder area



- This slide will show image placeholder like this



- **Step 2**, you can change image with **Drag & Drop Image** to placeholder area